

The Dr Companion Reference Suite

Dr Companion is an application designed to be used with multiple operating platforms. It is available on an adaptable memory module that can convert from an SD card to a USB stick through the removal of an adaptor plate.

The central data store is in a common format but the application comes with a variety of different executables that allow the following different operating systems to be used:



This means that, in theory, most makes of PDAs, Smartphones and computers will be able to run Dr Companion if the correct memory card slot is available.

The Dr Companion Memory Card



The memory card can be used in a variety of ways – it can be directly inserted into a suitable slot on a PDA or a multimedia card in a PC or laptop. Additionally, you can also use the card in a USB slot by carefully removing the small plastic adaptor plate from one corner of the card. It is inserted into USB from one end, SD slot at the opposite end. Do not confuse these.

Inserting the card into a device.

If this card is inserted into a PDA, depending on how that device is configured, Dr Companion may start up immediately.

In the example below, the USB card was plugged into a PC. Ensure that the memory card has the blank plate removed and is inserted into the USB port with the gold strips *normally* facing UP. If it is incorrectly inserted it will not get stuck, the PC will just not detect the card.

When the computer picks up the USB device, go to 'My Computer' and navigate to the drive mapping allocated to the USB card (Fig 1).

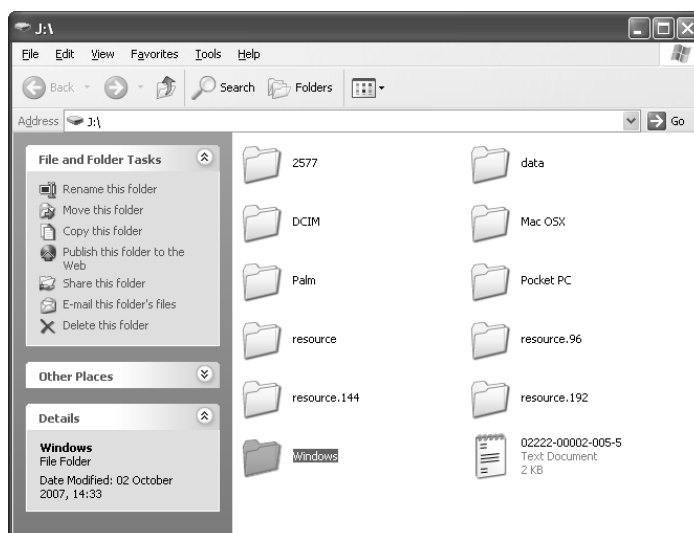


Fig 1

Select the folder relating to Windows or Mac and double click the executable (Fig 2). Dr Companion should open. You do not need to copy any files to the PC as the entire program is self-contained on the card.

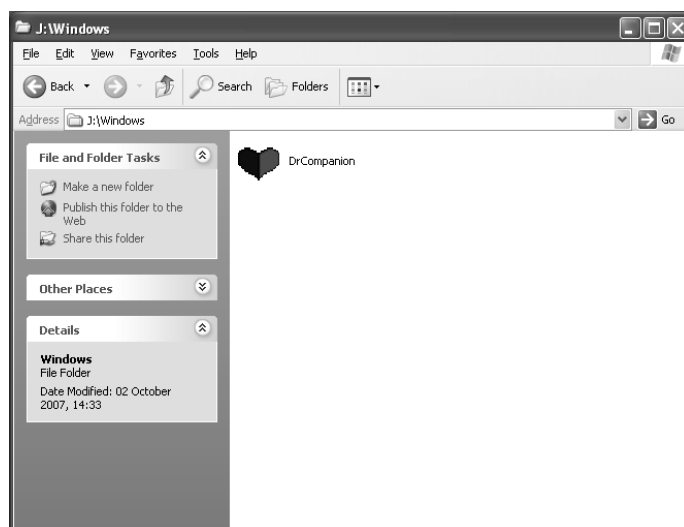


Fig 2

Synchronisation over the internet

It is recommended that a synchronisation be carried out at least once a month. If you do not keep to this frequency, you will be warned more and more often that a synch is needed.

To Synchronise

- 1) Start up Dr Companion
- 2) Click on the 'Keys' icon in the bottom left corner of the home page (Fig 3)

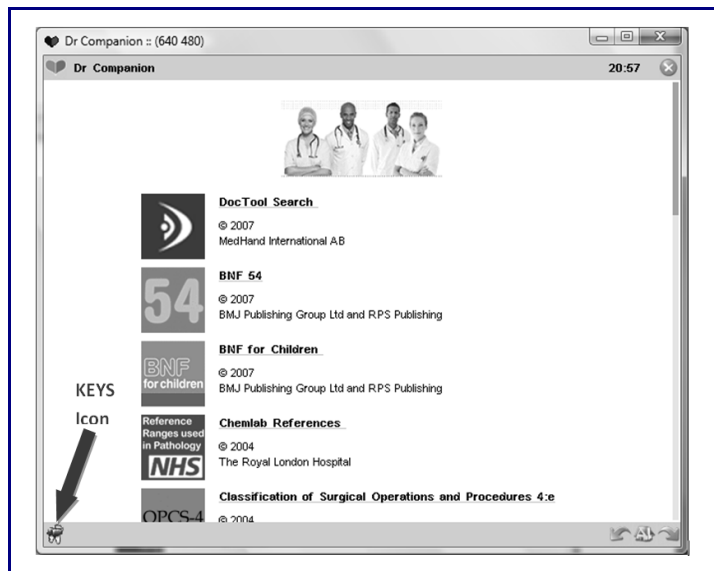


Fig 3

- 3) From the list of **Network:** sources on the right, choose one from the list that relates to your current locale. If your locale does not appear on the list then you cannot synch at that locale so you will have to synch from a normal internet connection. Ensure the Network is set to 'HOME' in that case (Fig 4). Once the locale is set, click 'START'.

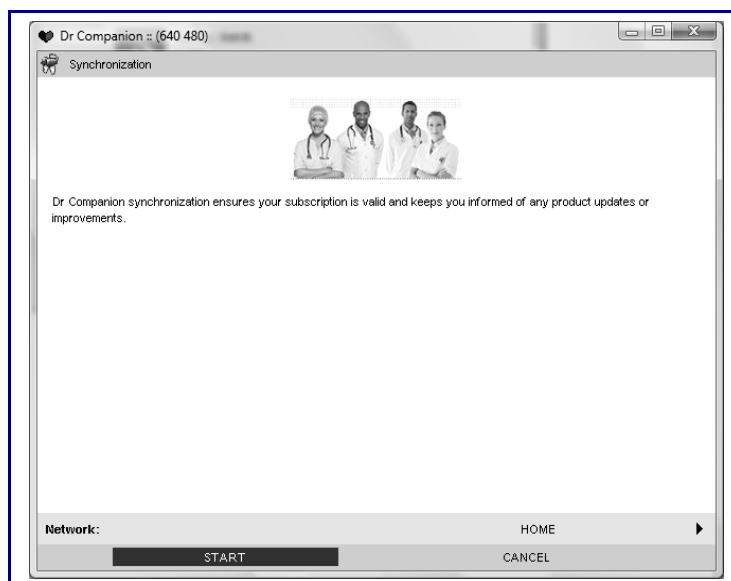


Fig 4

- 4) If there are any updated collections that need to be downloaded, Dr Companion will ask you to do so – this may take several minutes. Once synchronisation is complete, click 'DONE'. You will receive confirmation of the subscription validation date (Fig 5)

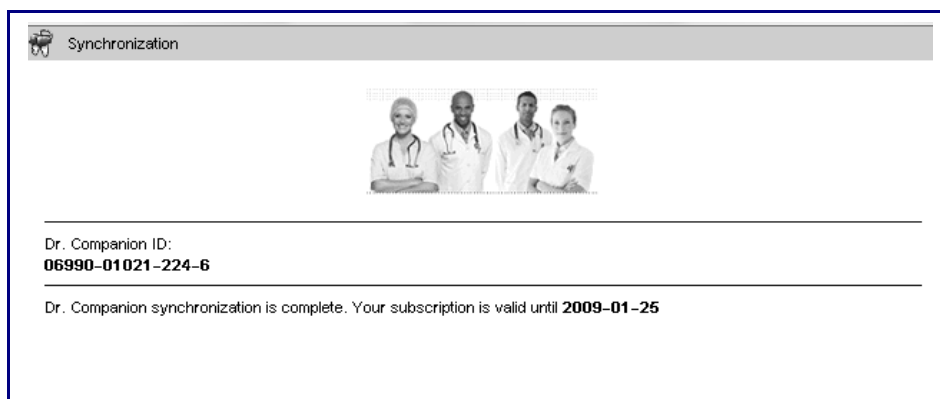


Fig 5

++ N.B. If you receive any notifications about updating system architecture (as per Fig 6), please advise your local Dr Companion contact and further guidance will be issued. However, the vendors should have given advance notice of this ++

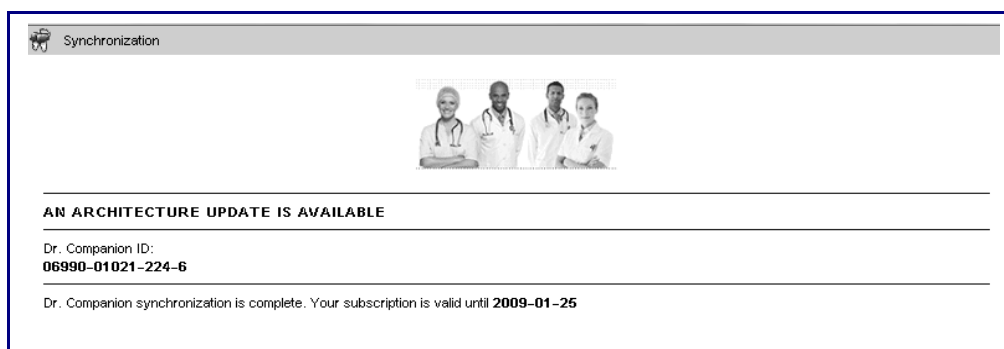


Fig 6

The Dr Companion Application

Dr Companion has a fairly simple interface that utilises the minimum of controls. When the user opens the application, the main home page is shown (Fig 7)

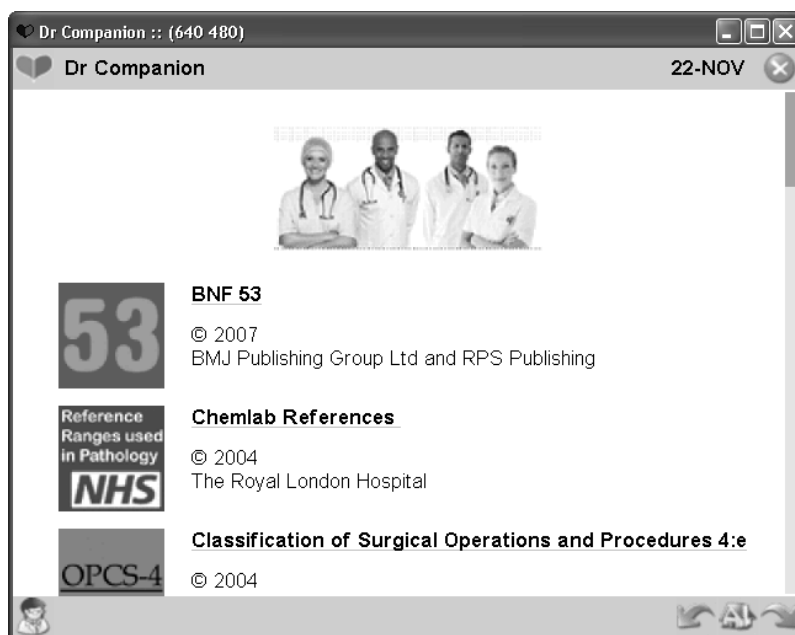


Fig 7

The User Interface

Controls

The control interface is also simple to use and master. All the control buttons are shown at Fig 8.

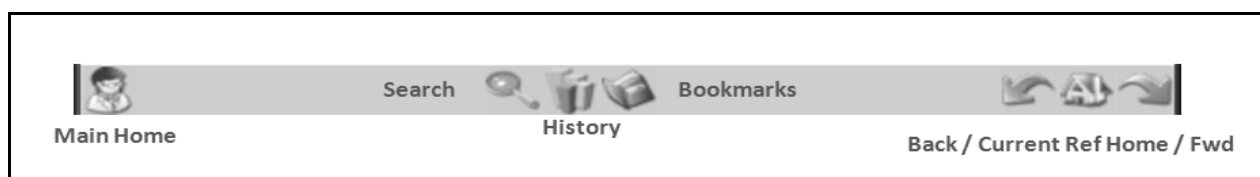


Fig 8

Operations

The [Main Home](#) and [Back / Current Ref Home / Fwd](#) buttons are available when the application is open. The [Search / History / Bookmarks](#) only work when a collection is being used but their functions are self-explanatory. The home button returns the user to the screen at Figure 7.

It is best to treat the application as a cut-down web page with the links between them taking the user to the presented information topics or search results.

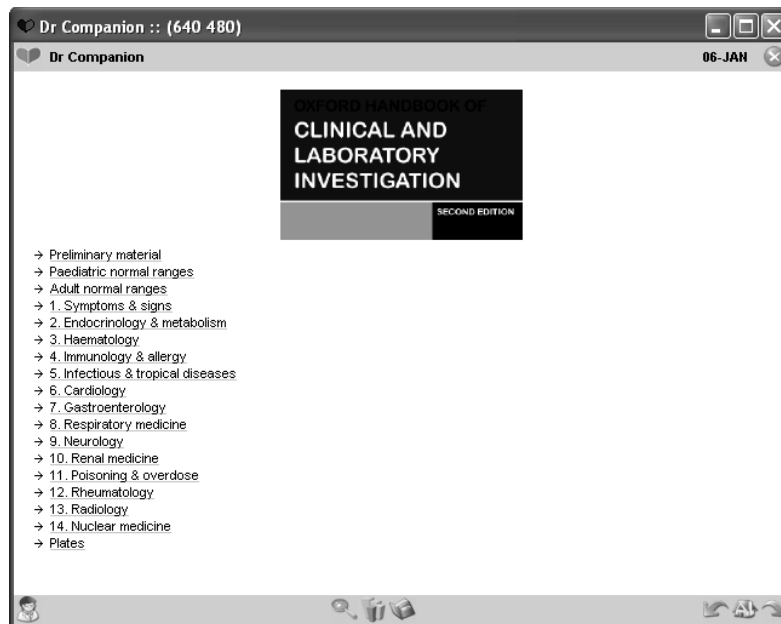


Fig 9

When the user wishes to look up the contents of a collection, simply browse the collection they require and click the relevant links therein. Such links are shown in figure 9 – they simply appear similarly to hyperlinks in a web page and this is how they should be treated. To move back through the collection click on the navigation links in the top left or click the **Current Ref Home** icon to start again in the same collection or the **Main Home** icon to get back to the Dr Companion start page.

Advanced Operations

Doc Tool Search (Fig 10)

Doc Tool Search allows you to search all of the collections for the same term, saving you valuable time whilst using Dr Companion.

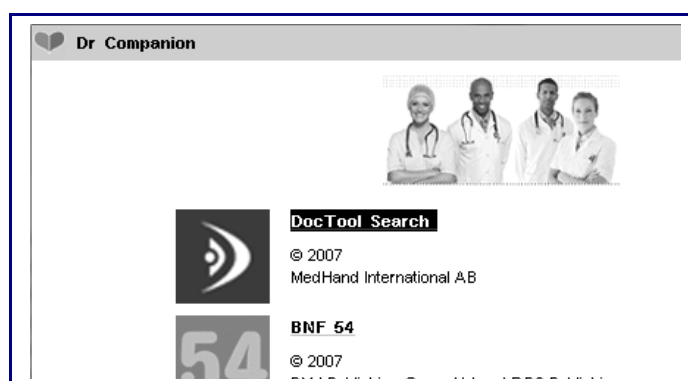


Fig 10

Operation (Fig 11)

Enter your search term in the text box (or use the internal keyboard shown at Fig 13) to enter text, click 'SEARCH'

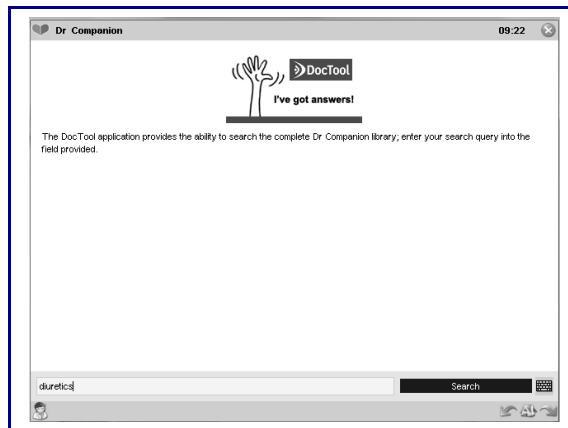


Fig 11

Results

Your search results will be grouped by literature collection (Fig 12)

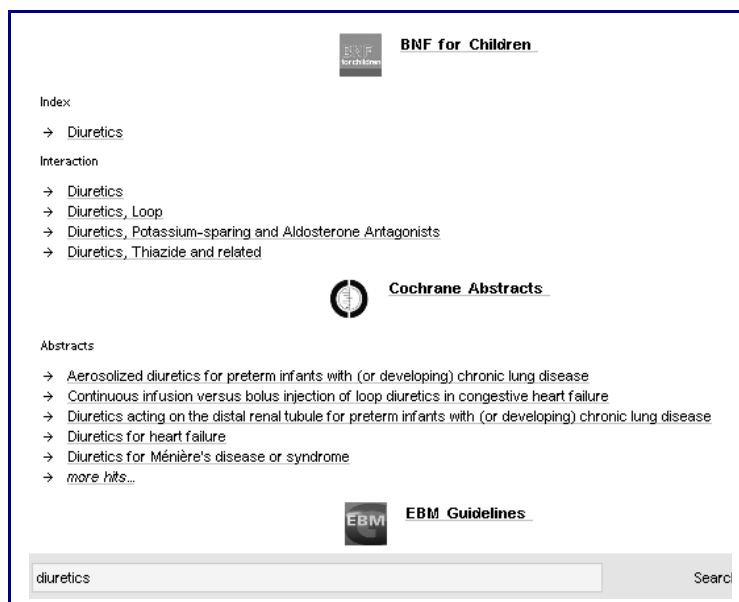


Fig 12

On-Screen Keyboard

The on screen keyboard can be used if you only have a stylus with your PDA rather than a full keyboard.

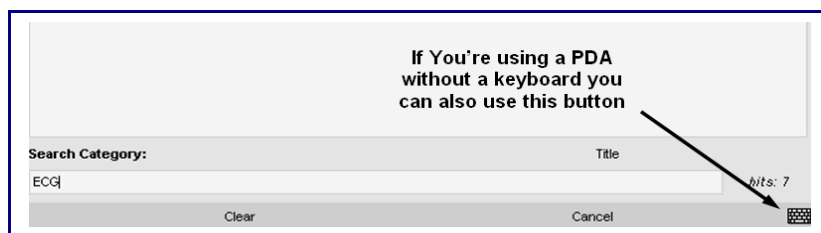


Fig 13

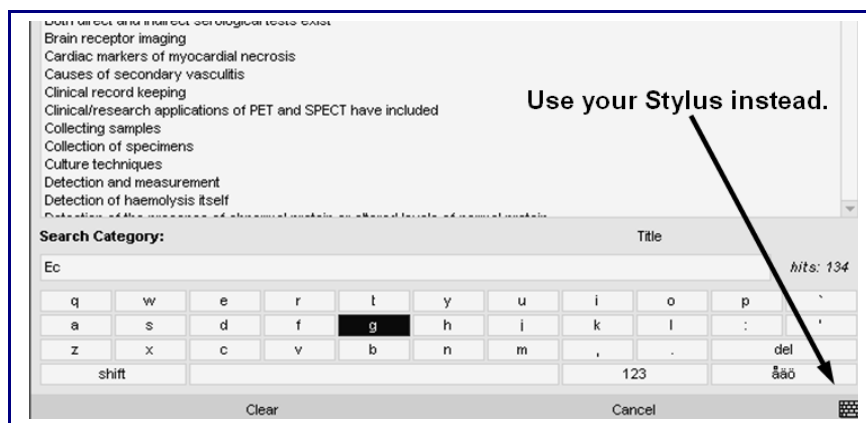


Fig 14

History and Bookmarks

Both these functions are very similar to a web browser. History and Bookmarks **only apply only within the collection selected**. The best way to utilise this is to use the Doc Search Tool first to search all collections and form Bookmarks in the individual collections.

Adjusting the Screen Orientation and Font Size

The standard layout is not accessible or comfortable for all users, especially those with small screens or eyesight problems. To alter Font Size, go to **Options** in top left corner (Fig 15)

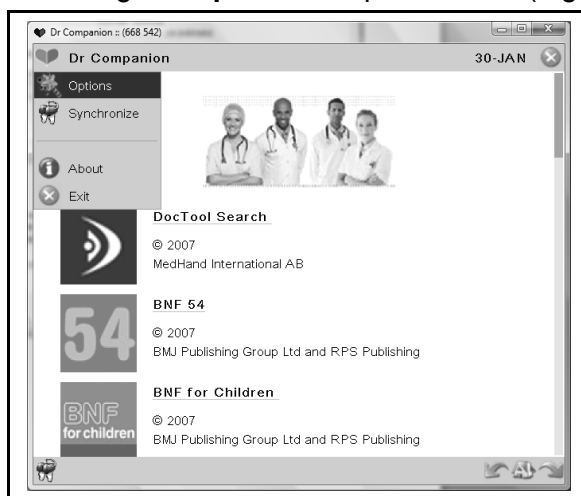


Fig 15

To change Font Size (Fig 16) click on the arrows below the text preview. Default size is Arial 9 Pts which can be increased to 12 or 16. **To change screen orientation** to accommodate PDAs or Smartphones with portrait orientated screens, click the two preview icons below the font size area

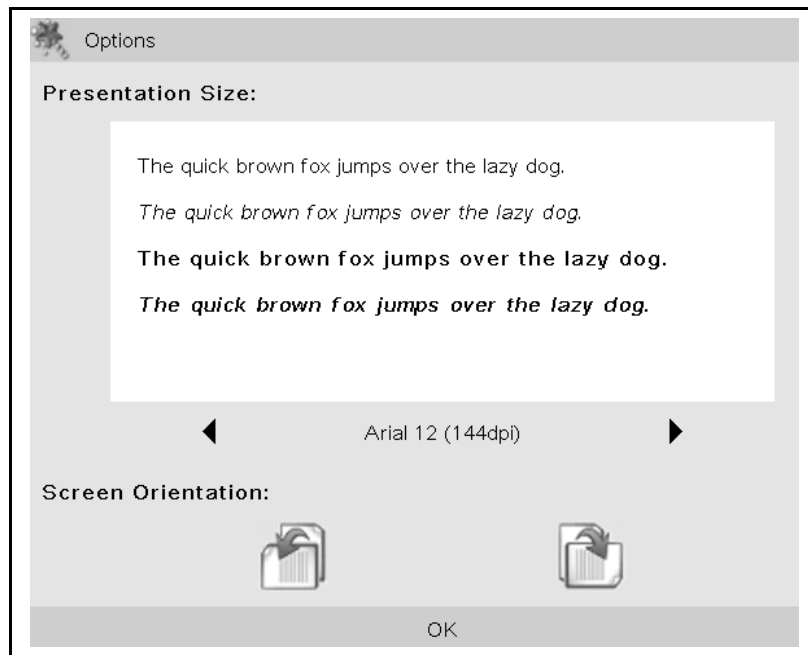


Fig 16

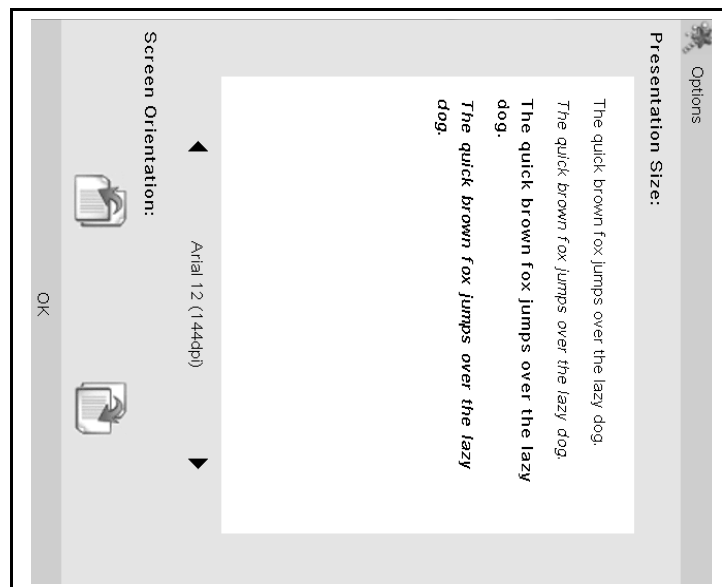


Fig 17

If you are happy with your changes, hit 'OK'

Included Publications and Collections

The Reference Manuals included with Dr Companion (2007 UK edition) are:

- BNF 54
- BNF for Children
- Cochrane Abstracts
- Classification of Surgical Operations and Procedures 4:e
- Clinical Evidence 14:e
- Chemlab References
- Diagnostic Criteria from DSM IV-TR
- EBM Guidelines
- Electronic Medicines Compendium
- International Classification of Diseases 10
- Instant Pictorial Anatomy
- NICE Guidance Compilation 10:e
- Oxford Concise Medical Dictionary 6:e
- Oxford Handbook of Clinical Medicine 6:e
- Oxford Handbook of Clinical Specialties 7:e
- Oxford Handbook of Clinical & Laboratory Investigations 2:e
- Patient Organizations UK

**Additional titles may be included in further editions of the software
look out for updated and new editions by synchronising regularly.**