



People with Experience as Partners in Health and Social Care Curricular Development

Diana Jones, Northumbria University,
and Angela Morgan, University of Teesside

Aims of session

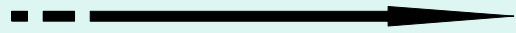
- To review the drivers for service user involvement in the curriculum
- To describe a regional collaborative network – CETL4HealthNE - within which service user involvement in the curriculum is being taken forward
- To discuss the aims and planned outcomes of the CETL4HealthNE People with Experience work stream
- To consider the challenges



Involvement drivers

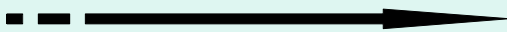
Driving the agenda forward in practice

The New NHS: Modern and Dependable 1997 *ment in the New NHS 1999*
The Expert Patient 2001 *Shifting the Balance of Power 2001* *Standards for Better Health 2004*
Commissioning a Patient Led NHS 2005 *Race Equality Guide 2004*



Driving the agenda forward in education

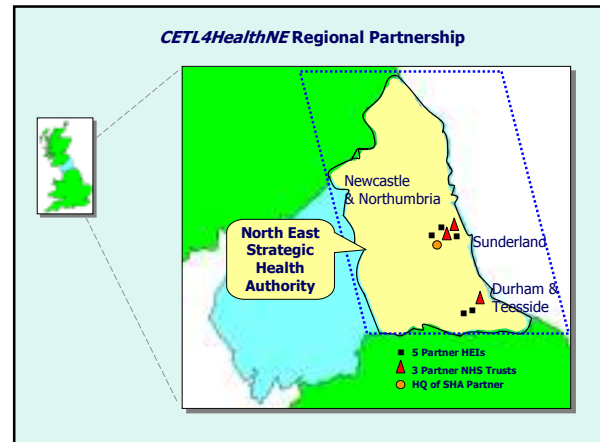
Professional body standards e.g. Nursing and Midwifery Council 2004, Chartered Society of Physiotherapy 2005 *Health Professions Council 2004*
Partnership Quality Assurance Framework 2003 *Research Governance Framework 2005*



What is the CETL4HealthNE?

CETL4HealthNE Vision ...

To foster curriculum development for employability in the modernised health care service



Where will the money go?

Capacity for Academic Development and Scholarship

- A Director, Deputy Director, Centre Director
- CETL Fellows
- Evaluator

Capital Expenditure

- Increasing connectivity

CETL Work Streams

- Interprofessional education
- 'People with Experience' – user involvement
- Peer group learning
- Practice based approaches to learning
- Health of the population
- Preparation for modernised health care

In years 1-3:

- CETL will impact on ~ 9,000 students:
 - Medicine
 - Dentistry
 - Speech & Language Therapy
 - Pharmacy
 - Nursing
 - Occupational Therapy
 - Physiotherapy
 - Social Work
 - Foundation Degrees
 - Radiography



People with Experience work stream

We're like compost, aren't we?

People with experience contribute ideas to a compost ...



which matures into themes ...



Enriched learning context and content produces an abundance and variety of growth

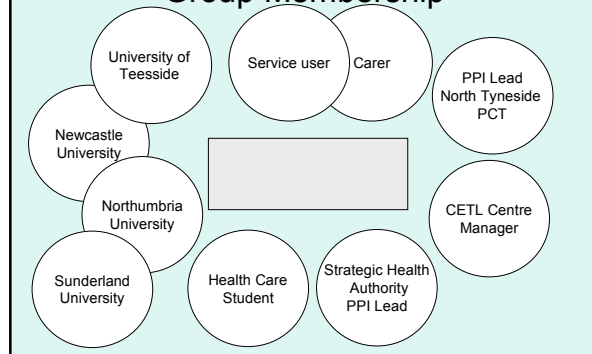
... that are incorporated into opportunities for common learning ...

Common Learning Project, North Tyneside, November 2002

Aim of People with Experience work stream

- To mainstream the involvement of people with experience in the development, delivery and assessment of curriculum in order to facilitate the preparation of health care professionals who will routinely involve users and their carers in decisions regarding their health and social care in order to meet their individual needs and the needs of their communities.

People with Experience Core Group Membership



People with Experience: aims and activities

A. Raise awareness

- 1. organisation of regional events and sharing local events to disseminate best practice**
- collating and synthesising relevant literature
- development of links with other CETLs and groups focusing on similar issues



- Listening to Voices workshop
- Service Users and Carers as Partners in the Curriculum: an interactive staff development day
- Forthcoming regional event to identify training needs for service users

People with Experience: aims and activities

A. Raise awareness

- organisation of regional events and sharing local events to disseminate best practice
- 2. collating and synthesising relevant literature**
- development of links with other CETLs and groups focusing on similar issues



Types of involvement in education of healthcare professionals (Repper & Breeze, 2004):

- Consultation with consumers about the content of training
- Creating a consumer reference group to advise on curricula
- Surveying the views of consumers on what should be taught
- Consumers producing learning materials
- Consumers as teachers and assessors

**People with Experience:
aims and activities**

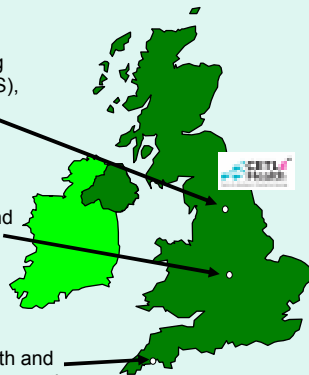
A. Raise awareness

1. organisation of regional events and sharing local events to disseminate best practice
2. collating and synthesising relevant literature
- 3. development of links with other CETLs and groups focusing on similar issues**

Assessment and Learning in Practice Settings (ALPS), University of Leeds.

Centre for Excellence in Interdisciplinary Teaching and Learning in Mental Health, University of Birmingham

Placement Learning in Health and Social Care, University of Plymouth



**People with Experience:
aims and activities**

B. Develop and promote the use of resources

- 1. the development of meaningful models and tools**
2. the development and pilot testing of tools to involve users in the assessment of students in practice
3. the development of an archive of material to facilitate learning experiences that have the users of service at the centre

Off the shelf:

Principles for Practice (Trent SHA, 2005)

Learning from Experience (Tew et al, 2004)

Involving Service Users and Carers in Social Work Education (SCIE, 2004)

Reward and Recognition (DoH, 2006)



Bespoke:

Making it Happen Project, Northumbria University

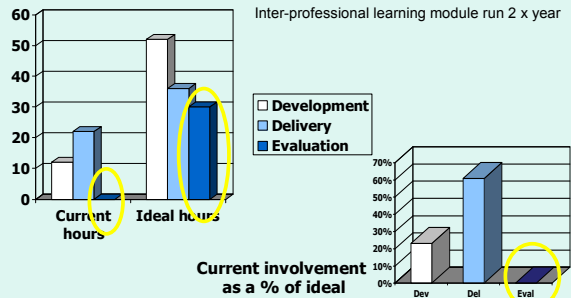


**People with Experience:
aims and activities**

B. Develop and promote the use of resources

1. the development of meaningful models and tools
- 2. the development and pilot testing of tools to involve users in the assessment of students in practice**
3. the development of an archive of material to facilitate learning experiences that have the users of service at the centre

Current and ideal involvement activity



People with Experience: aims and activities

B. Develop and promote the use of resources

1. the development of meaningful models and tools
2. the development and pilot testing of tools to involve users in the assessment of students in practice
3. *the development of an archive of material to facilitate learning experiences that have the users of service at the centre*



Online multimedia database of narrative resources related to local individuals' experiences of healthcare

BENEFITS:

CETL partners

staff development
learning resource

Voluntary sector partners

learning new skills and technologies
therapeutic benefits
empowerment

Students

sensitised to individual voices
locally generated, searchable resource

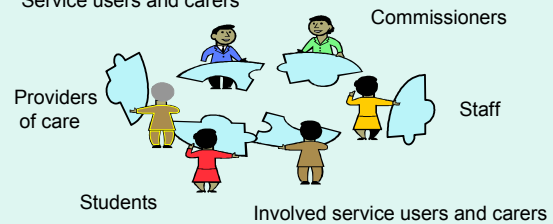


People with Experience: aims and activities

C. Impact evaluation

- development of a long term evaluation plan

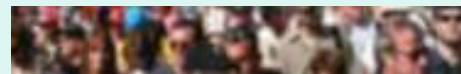
Service users and carers



Challenges

- Competitive context within Higher Education
- Time and funding for collaboration
- Meaningful and mainstreamed involvement
- Achieving reciprocity
- Access the voices of those who are hard to reach

CETL People with Experience web address



<http://www.cetl4healthne.ac.uk/CETLPione/strands>